



Baltic Industrial Park



Invitation to cooperation



250 hectares





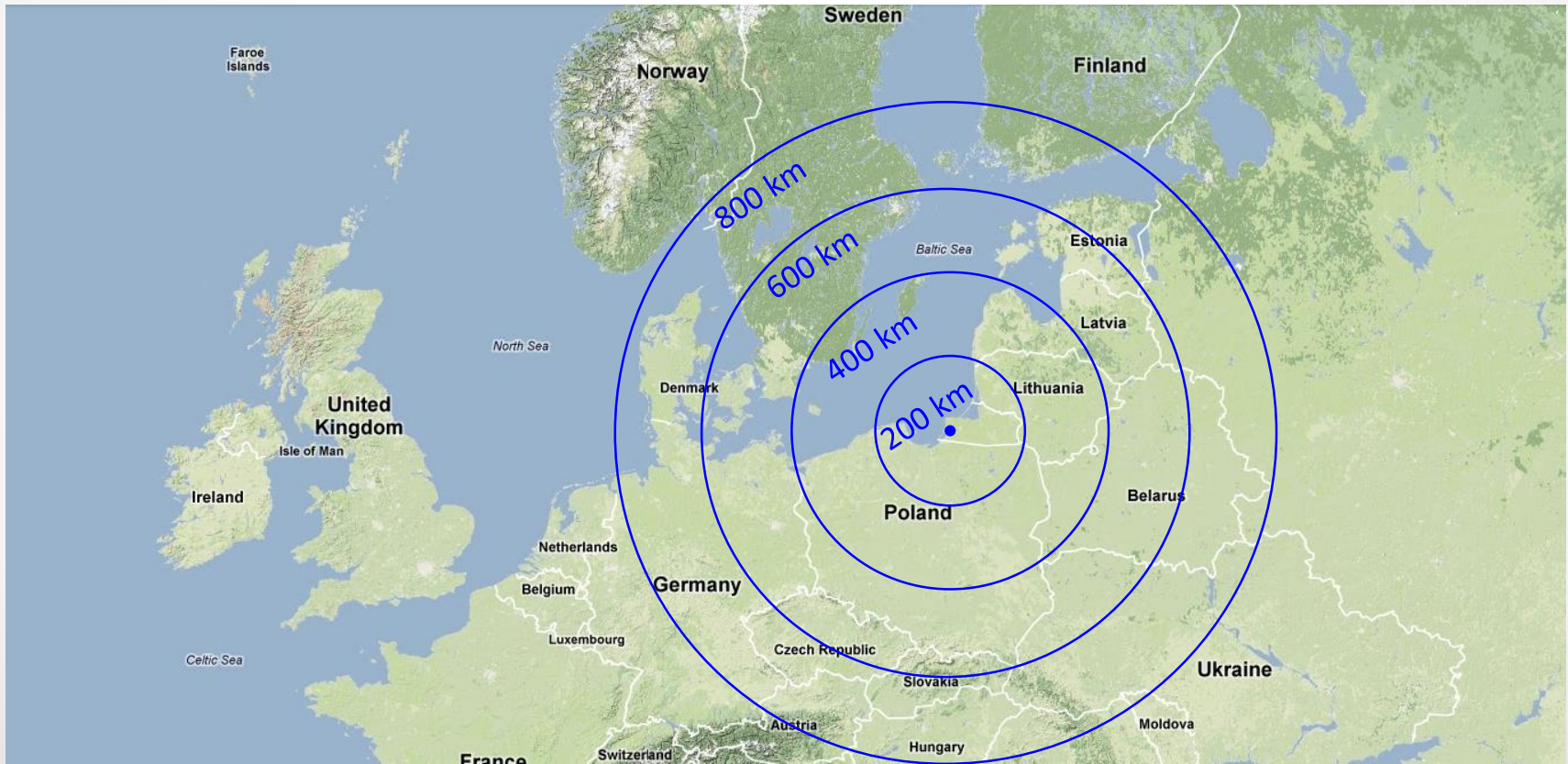
PROPOSAL

Baltic Industrial Park:

- ☐ offers plots of land to investors for industrial use
- ☐ guarantees connection to infrastructure facilities
- ☐ provides auxiliary services requested by investor



LOCATION



UTILITIES INFRASTRUCTURE



- ☐ Transformer substation — 2 transformers 25 MVA each
- ☐ Boiler house — 3 steam boilers 12 tons of steam per hour each
- ☐ Natural gas supply system (Due in QQ I-II, 2014)
- ☐ Water intake and conditioning complex
- ☐ Waste water and dark-oil products treatment facilities
- ☐ Unloading rack and storage for dark-oil products
- ☐ Fire station



TRANSPORT INFRASTRUCTURE



- ☐ Brand-new highway from the airport — 30 km
- ☐ Network of in-park motor roads — 5,000 m
- ☐ Railway tracks connected to major railroads — 10,640 m
- ☐ Sea port terminal — under construction



SEA PORT TERMINAL



- ❑ Moorage wall length — 900 m
- ❑ Terminal capacity — 340,000 TEU per year
- ❑ Ro-Ro berths — 150,000 cars per year
- ❑ Step-by-step launch — from 2016 to 2022





SERVICES OFFERED

- ☐ Land surveying
- ☐ Construction supervision
- ☐ Office and warehouse rentals
- ☐ Telecommunications
- ☐ Customs clearing agent
- ☐ Freight forwarding
- ☐ Personnel transfer
- ☐ Cargo transportation
- ☐ Security
- ☐ Medical support
- ☐ Catering
- ☐ Analytic laboratory
- ☐ Utilities - electricity, steam, gas, water
- ☐ Transshipment of goods



RESIDENTS

- ❑ ZAO Alco-Nafta - production of polyethylene terephthalate (PET)
 - ❑ 220,000 tons of product per year
 - ❑ Biggest plant of the type in Russia and CIS



- ❑ OOO Trafalgar - production of concrete pavement
 - ❑ 5,000 slabs per year
 - ❑ Slabs are used for airport runways, roads, industrial pavements





SPECIAL ECONOMIC ZONE*

Upon entry in the register:



- ☐ First 6 years - No income or property tax
- ☐ Following 6 years - 50% of established tax rate
- ☐ No increase in total tax burden



- ☐ No customs duty on raw materials
- ☐ No VAT or customs duty on imported equipment

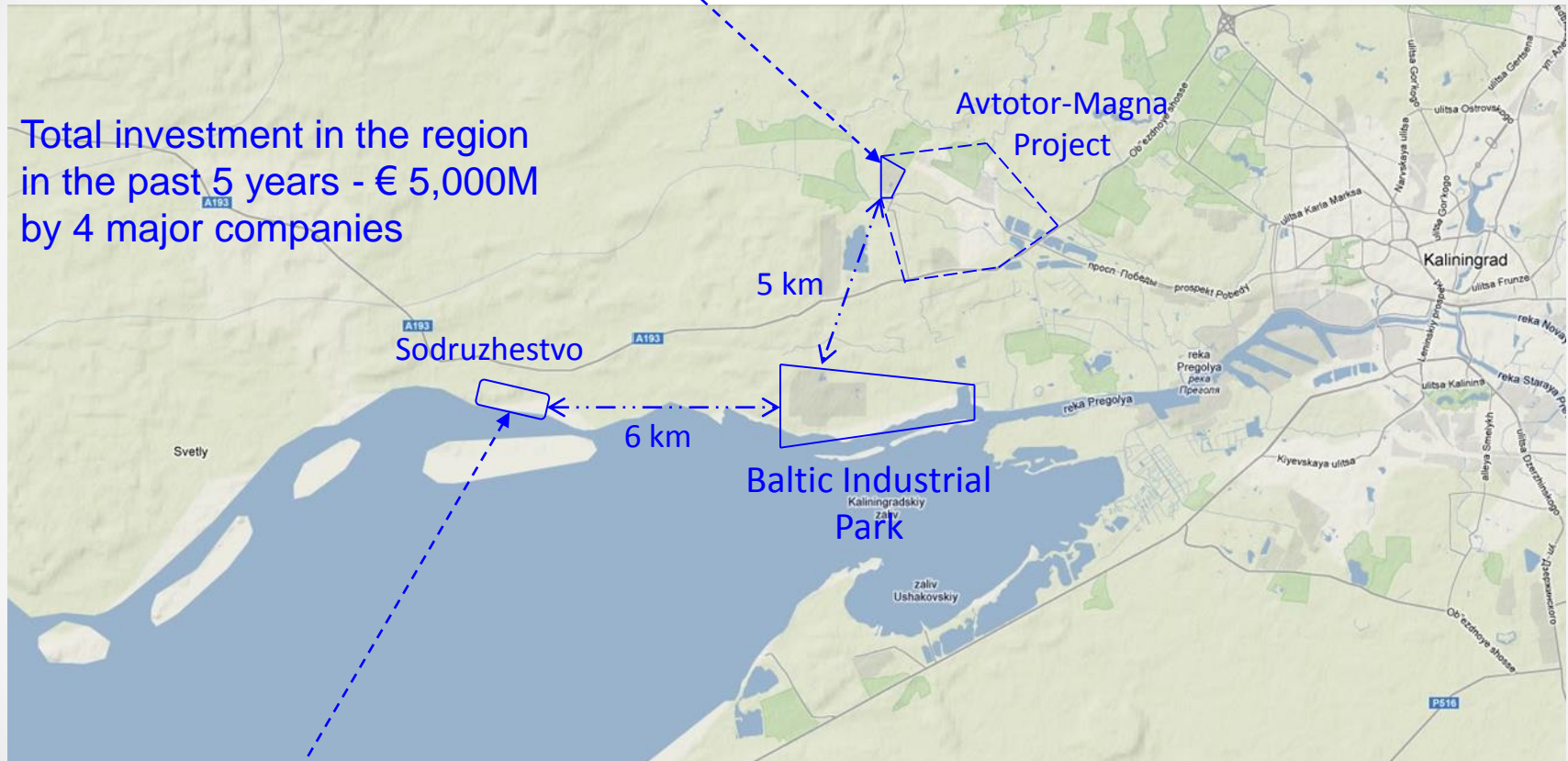
* Valid until 2031
Conditions apply



OTHER BENEFITS

- ☐ High migrant worker intake quotas
- ☐ Highly educated labour force
- ☐ Low wages
- ☐ Low deductions for labour compensation fund
- ☐ Cheaper utilities than in European Union

BMW, Kia, Hyundai, GM, Subaru, Land Rover assembly
Joint project of Magna International and Avtotor
6 full-cycle and 15 components production plants,
Capacity — 350,000 to 500,000 cars per year (in 2016)



Soybean and oilseed rape processing — \$2,500M turnover 2012
Businesses in the Baltic region, Europe and South America



THANK YOU
FOR YOUR ATTENTION